

SAFE-GAUGE®

PRODUCT CATALOGUE



☎ **1300 222 392**

🌐 **safegaug.com**



OUR MISSION

Ensure that no one has to risk their safety when live testing heavy machinery.

WHAT WE DO

SafeGauge has an innovative focus on developing new technology designed to remove technicians from the 'line of fire' when live testing heavy mobile plant machinery in heavy industries, such as mining, defense, construction, agriculture, and oil & gas.

To this end, we've developed a range of specialist wireless testing solutions that allow workers to safely maintain heavy machinery from a safe distance (up to 100m/328ft). Our multi-award winning SafeTest range of Pressure Transducers (PT Series), Dial Indicators (DI Series) and Tachometers (TM Series) are the go-to solutions for heavy industry applications.

When combined with the SafeGauge Wireless MultiTool or MultiTool Pro, maintenance technicians can take multiple readings from any combination of SafeTest products simultaneously - minimising machine downtime and delivering significant productivity gains.

Today, SafeGauge remains proudly Australian-owned, with sales in over 15 countries & backed by a global distribution network that promotes & supports safer working practices in heavy industry sectors all around the world.

AWARDS



STAY SAFE WORK SMART

ELIMINATE LIVE WORK (ELW)

Minimize the chances of crush and fluid injection injuries while performing essential live work tasks.

OUR VALUES



**SAFETY ALWAYS
COMES FIRST**



**INTEGRITY
AND ETHICS**



**EXCELLENCE
IN QUALITY**



**INNOVATION &
ADAPTABILITY**



**KEEP A CUSTOMER
CENTRIC APPROACH**



**COLLABORATION
AND TEAMWORK**

Without SafeGauge's products, our workers would be in the line of fire. Their products allow us to get our people right out from in front of the machines; without them, there's a chance of them getting injured or burned

Stuart Arndell - Managing Director, Mackellar Group



INTRODUCTION

Our Pressure Transducers allow technicians to monitor hydraulic and pneumatic pressure from up to 100m (328ft) away, safely and efficiently.

OVERVIEW

Available in kits of different quantities. These kits can be configured with different pressure ranges to suit any applications.

Packaged in a rugged hard shell carry case, with bespoke high density foam moulding and built-in charging harness, the SafeGauge Pressure Transducer is always ready to go at a moment's notice.

Pair your kit with our wide range of accessories such as specialized fittings and adaptors, extension hoses and magnetic bases to enable completely hands-free pressure testing. The Pressure Transducer is available in a variety of pressure range options.

TECHNICAL SPECS

ELECTRICAL

Battery: Li-on Single Cell

Operating Time: Up to 20 hours

Battery life-cycle: 500 charging cycles

Charging Time: 3 hours

MECHANICAL

Dimensions: 32mm (diameter) x 100m (Length) (1.26in x 3.94in)

Connector thread size: 1/4" NPT

Pressure measurement range: -1 to 600 bar / -15psi- 8702 psi

Suitable Materials: Oil & Gas (Grease not recommended)

Accuracy full scale: 0.2% Full Scale

Max fluid temperature: 85°C (185°F)

Sensor operating temperature: 0-65°C (32 - 149°F)

Calibration: To be performed by Safegauge ONLY

COMMUNICATION

Maximum range: Up to 100m (328ft)



“When the machines are running, there’s a lot of high pressure and hot oil around, which are obviously quite dangerous. With SafeGauge products, operators can go and sit up in the cab of the machine and are completely away from the source.”

- Stuart Arndell - Managing Director, Mackellar Group



INTRODUCTION

Safe-Gauge's Dial Indicator is designed to remotely measure clearances, tolerances and wear on machine components safely and efficiently - out of line of fire.

OVERVIEW

Recognized as a new industry standard. Packaged in a rugged hard shell carry case, with built-in charging harness, the SafeGauge Dial indicator is always ready to go at a moment's notice.

Additionally, the Dial Indicator comes in various kit sizes, depending on how many you need. Our Wireless MultiTool and Charging Case. Kits are supplied with everything needed to setup and conduct testing, including high quality mag bases.

TECHNICAL SPECS

ELECTRICAL

Battery: Nickel Metal Hydride
Operating Time: Up to 10 hours
Battery life-cycle: 1000 charging cycles
Charging Time: 4 hours

MECHANICAL

Measurement range: 10mm (0.394in)
Resolution: +/- 0.01mm (0.0005in)
Operating temperature: 0-60°C (32 - 140°F)

COMMUNICATION

Maximum range: Up to 100m (328ft)

Disclaimer: While every effort has been made to ensure the accuracy of this document at the date of issue, SafeGauge assumes no liability resulting from any omissions or errors in this document, and reserves the right to revise content at any time.



“ We got a chance to use the Bluetooth Dial Indicator to measure the upper hoist pin movement and the nose cone movement on one of the 794’s. It worked great we could stand on the ground instead of standing on a ladder to read a normal dial gauge.”

Field Service Fitter, Southern Division



INTRODUCTION

The Tachometer enables completely wireless RPM measurement, keeping technicians out of the live work area while monitoring the speed of fans, pumps, drill heads, and other rotating components.

OVERVIEW

This rugged, non-contact laser tachometer is designed to achieve fast, accurate measurements in the harshest mining environments while out of harm's way.

Use the Wireless MultiTool or MultiTool Pro to capture multiple RPM measurements at the same time. The Tachometer comes in various kit sizes, depending on how many you need. Each kit comes with our Wireless MultiTool and a Charging Case.

TECHNICAL SPECS

ELECTRICAL

Battery: Internal LiPo (Lithium Polymer) 3.7 volt pack

Operating Time: Up to 12 hours

Battery life-cycle: 1000 charging cycles

Charging Time: 4 hours

MECHANICAL

Ingress Protection: IP67

Operating Range (Tested): 0.1 - 1.5mm (0.3 - 4.9ft.)

Operating Range (Angles): 15° - 45° off target

Classification: Class 2 (Per IEC 60825-1:2014)

Accuracy: +/- 0.01% of reading

Reflective Material: Use **ONLY** with reflective tape supplied by SafeGauge

Operating temperature: -10 to 15°C (14 - 122°F)

COMMUNICATION

Maximum range: Up to 100m (328ft)



“This is the best photo tach I have used, and it can be set up with machine isolated and used under live test procedure.”

- Field Service Auto Electrician



INTRODUCTION

The push rod enables technicians to obtain precise displacement measurements quickly and safely between two fixed points, even in areas with uneven surfaces or at varying angles.

OVERVIEW

The versatile articulating magnetic mount allows for rapid setup time and flexibility in mounting locations.

Simply place the sensor across the measured points, zero the sensor and watch as accurate data streams into the MultiTool Pro. The rubber-coated magnets fix the SafeGauge Push Rod to machinery securely, and provide vibration resistance during dynamic testing.

TECHNICAL SPECS

ELECTRICAL

Battery: Internal NiMH (Nickel Metal Hydride) pack
Operating Time: Up to 25 hours
Battery life-cycle: 1000 charging cycles
Charging Time: 4 hours

MECHANICAL

Ingress Protection: IP67
Accuracy (Travel) : +/- 0.05mm (0.002in) over 100mm(0.4in) of travel
Accuracy (Full Scale) : +/- 0.25mm(0.01in) of full scale
Measurement Span: 50mm (1.97in)

COMMUNICATION

Maximum range: Up to 100m (328ft)



“When a machine is down, you need answers quick. This is a very useful, proven product, perfect for the job. Being a lightweight measuring device means it will stay securely on the machine and give accurate measurements.”

- Field Service Supervisor



INTRODUCTION

Laser Displacement enables completely wireless non-contact measurement of moving parts, removing technicians from the live work area while measuring the wear in machinery components such as slew rings, ball joints and pins.

OVERVIEW

SafeGauge's Laser Displacement enables completely wireless non-contact measurement of moving parts, removing technicians from the live work area while measuring the wear in machinery components such as slew rings, ball joints and pins.

This rugged, non-contact laser displacement sensor is designed to achieve fast, accurate measurements in the harshest mining environments while out of harm's way.

It's magnetic mounting system allows quick setup, and pairing with the MultiTool Pro enables technicians to capture multiple measurements at the same time. Packaged in a rugged hard shell carry case with built-in charging harness, The Laser Displacement Kit is always ready to go at a moment's notice.

TECHNICAL SPECS

ELECTRICAL

Battery: Nickel Metal Hydride
Operating Time: Up to 6 hours
Battery life-cycle: 1000 charging cycles
Charging Time: 4 hours

MECHANICAL

Ingress Protection: IP67
Mounting: Laser enclosure has both M6x1 and 1/4 - 20 thread types for versatile mounting options (Supplied as standard with swivel ball head, utilizing 1/4 - 20 thread)
Operating Range: 35mm (1.38in) to 65mm (2.58in) from target (30mm (1.18in) span)
Classification: Class 2 (Per IEC 60825-1:2014)
Accuracy: 0.1mm (0.0039in)
Sensor operating temperature: -10 to 45°C (14 - 113°F)

COMMUNICATION

Maximum range: Up to 100m (328ft)



“It’s easy to setup, and the big advantage is it can get into tight spaces. It will be a handy tool.”

- Field Service Fitter



INTRODUCTION

The SafeGauge MultiTool Pro takes Elimination of Live Work (ELW) to the next level - allowing maintenance technicians to seamlessly connect and monitor up to 12 SafeGauge sensors simultaneously, from up to 100m (328ft) away.

OVERVIEW

The intuitive 'plug-and-play' touchscreen interface comes packed with a host of new features, including data-logging and graphing, with the ability to generate comprehensive reports that can be exported and shared via in-built cloud connectivity.

Fit for heavy duty applications, the IP68 device comes in a rugged case with attached stylus pen. SafeGauge's MultiTool Pro serves as a robust, data-driven solution - setting a new safety standard in heavy-vehicle maintenance, and delivering significant productivity gains.

TECHNICAL SPECS

ELECTRICAL

Battery: Li-on Single Cell

Operating Time: Up to 20 hours

Battery life-cycle: 500 charging cycles

Charging Time: Up to 3 hours

MECHANICAL

IP Rating: IP68

Operating temperature: 0 - 65°C (32 - 149°F)

Units - Pressure: psi, KPA, bar, MPa, km/cm, inHg

Units - Displacement: mm, inch

Units - Revolution: RPM

COMMUNICATION

Maximum range: Up to 100m (328ft.)

Radio Type: Bluetooth(BT Low Energy) 2.4 Ghz, Wifi 2.4/5 Ghz, LTE Cellular (Sim included)

Channels: Up to 12 paired Devices

Data Export: PDF and CSV



“The remote tools that monitor hydraulic pressure were particularly handy on the excavators. Without them, our teams would be stationed literally under the machines while they checked them.”

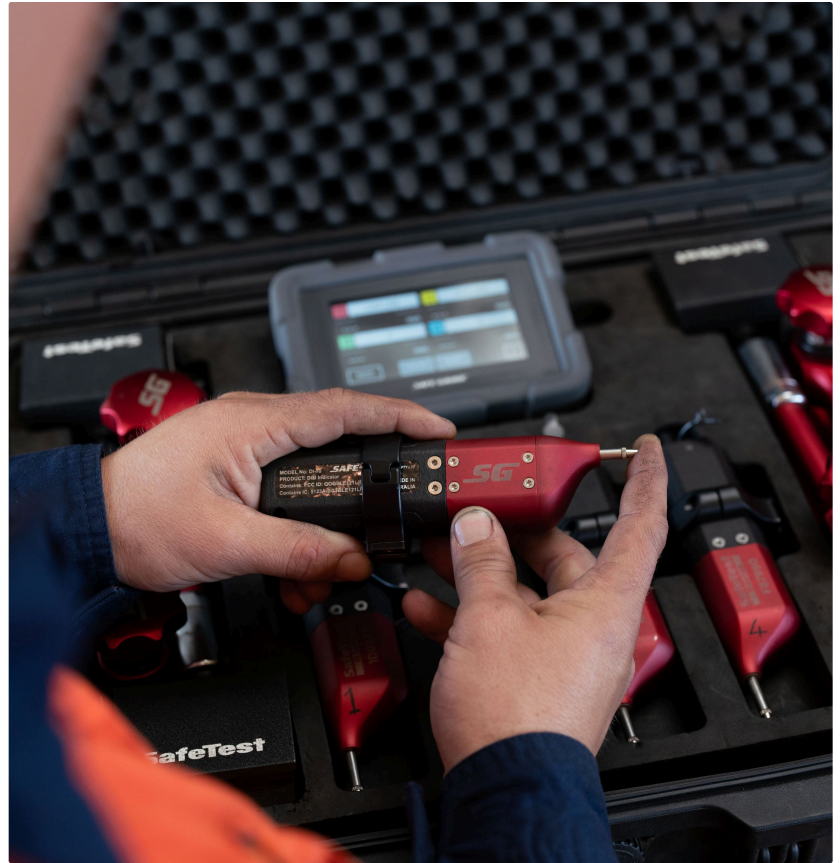
- Field Service Supervisor



MACKELLAR GROUP HAS IMPLEMENTED SAFEGAUGE PRODUCTS ACROSS ITS OPERATIONS TO IMPROVE SAFETY AND INCREASE EFFICIENCY.

MacKellar Group has a long history in the mining sector. Since its inception in 1966, the company has seen its fair share of safety products come and go, but none have stood the test of time like the range from SafeGauge.

Mackellar Group's Managing Director, Stuart Arndell, talks us through this case study.



CLIENT DETAILS

Location: QLD, Australia
Year: 2023
Application: ELW
Solution: PT & DI Series



ISSUES ON-SITE

When Mackellar machines are running, there's a lot of high pressure and hot oil around, which are obviously quite dangerous. Additionally, teams would be stationed literally under the machines while they checked them and if something moved, it would be a horrible end to that story.

THE CLIENT

MacKellar Group, a leading mining company, has a long-standing commitment to safety and operational excellence. To further enhance their safety measures, MacKellar decided to explore the solutions offered by SafeGauge.

They first met with the SafeGauge team in Feb 2023, at their Head Office in Nambour and were so impressed they purchased the tooling immediately.

The SafeGauge equipment was promptly sent to MacKellar's Middlemount and Carmichael sites in early March and use of dial indicators and pressure test kits began immediately.

Maintenance fitters at both sites were very impressed with the SafeGauge tooling, which increased efficiency and reduced the time to perform these tasks.

“ MacKellar uses SafeGauge products across its dump trucks, dozers and excavators. Without SafeGauge's products, our workers would be in the line of fire. The SafeGauge products allow us to get our people right out from in front of the machines; without them, there's a big chance of them getting injured or burned. With SafeGauge products, operators can go & sit up in the cab of the machine and are completely away from the source.”

PRODUCTS USED



PRESSURE TRANSDUCER



DIAL INDICATOR



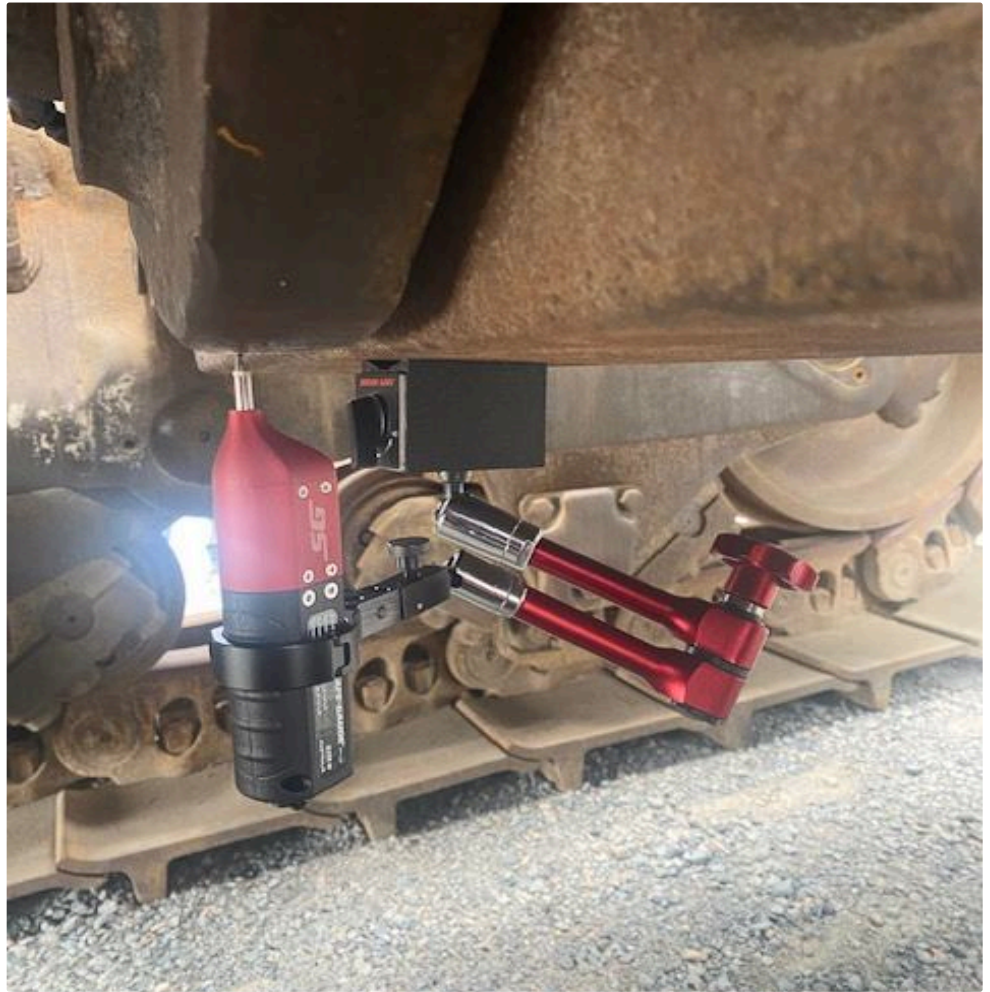
WIRELESS MULTI-TOOL

THE SOLUTION

The SafeGauge live-testing products that MacKellar has adopted include the six-channel pressure test gauge and the four-channel dial indicator testing kit.

The SafeTest Dial Indicator is a Bluetooth-enabled device that remotely measures clearances, tolerances and wear on a machine, while the Pressure Transducer is ideal for measuring gas or fluid pressure systems across various mobile equipment.

All kits come with the SafeTest MultiTool (touchscreen monitor) that allows maintenance technicians to carry out routine testing across multiple channels simultaneously from up to 50m distance - outside the machine footprint and away from the 'line of fire'.



THE RESULTS

While it might come as no surprise that SafeGauge's products enhanced safety, MacKellar also found that its efficiency was improving.

"Taking measurements and values has been quicker, because everything is recorded digitally. Having electronic readings and storage means we make far less mistakes, and we can pass all maintenance records on much quicker."

" Seeing that personal touch that SafeGauge has was great, and from an overall equipment perspective, it was probably the easiest transition that we have ever done."

" The whole maintenance and servicing process goes so much quicker, which helps to decrease downtime and gets the machines back up and doing their jobs. "

KITS USED



- 2 Pressure Transducers
- 1 Dial Indicator
- 1 Wireless MultiTool

FIELD SERVICE KIT (FS3)

PIVOTREE

PIVOTREE INTRODUCES SAFEGAUGE PRESSURE TRANSDUCERS TO THEIR TESTING PROGRAM.

Pivotree Managing Director, Christopher Merrick discusses the benefits of using SafeGauge in the manufacturing of their groundbreaking Pivotree technology; a self-supporting hydrocarbon production system, which provides clients the ability to generate profit from previously marginal or stranded offshore oil and gas fields.

ISSUES ON-SITE

During manufacturing, technicians are required to test multiple different areas of the subsea Pivotree for pressure containment (pressures up to 345bar), and connector and valve function. Real time monitoring of multiple pressure areas is required to positively verify the testing operations.

CLIENT DETAILS

Location: Western Australia

Year: 2023

Solution: PT & DI Series



THE SOLUTION

After searching online Pivotree came across SafeGauge and instantly knew they had found the solution they had been looking for.

During production, the SafeTest Pressure Transducers (600bar) are installed on double-block and bleed manifolds that are connected to various pressure containing areas of the subsea Pivotree.

The simultaneous read outs to the MultiTool Pro are monitored during testing operations with data being recorded as part of the inspection & test plan (ITP).



PRESSURE TRANSDUCER



“SafeGauge provides an excellent product and the new MultiTool Pro with data logging functionality makes the testing of equipment with complex geometry safer, faster, and easier to report on.”

**CHRISTOPHER MERRICK
MANAGING DIRECTOR, PIVOTREE**

“I believe there is a wide applicability of the SafeGauge products in oil and gas ”



MULTI-TOOL PRO

SAFE-GAUGE

BENEFITS

- Maximize Security
- Eliminate Live Work
- Wireless up to 100m (328ft)
- Real time data logging & graphing
- Excellent Quality Products
- Customer-Centric Approach
- IP Rated Designs
- Purpose Built for Heavy Industry

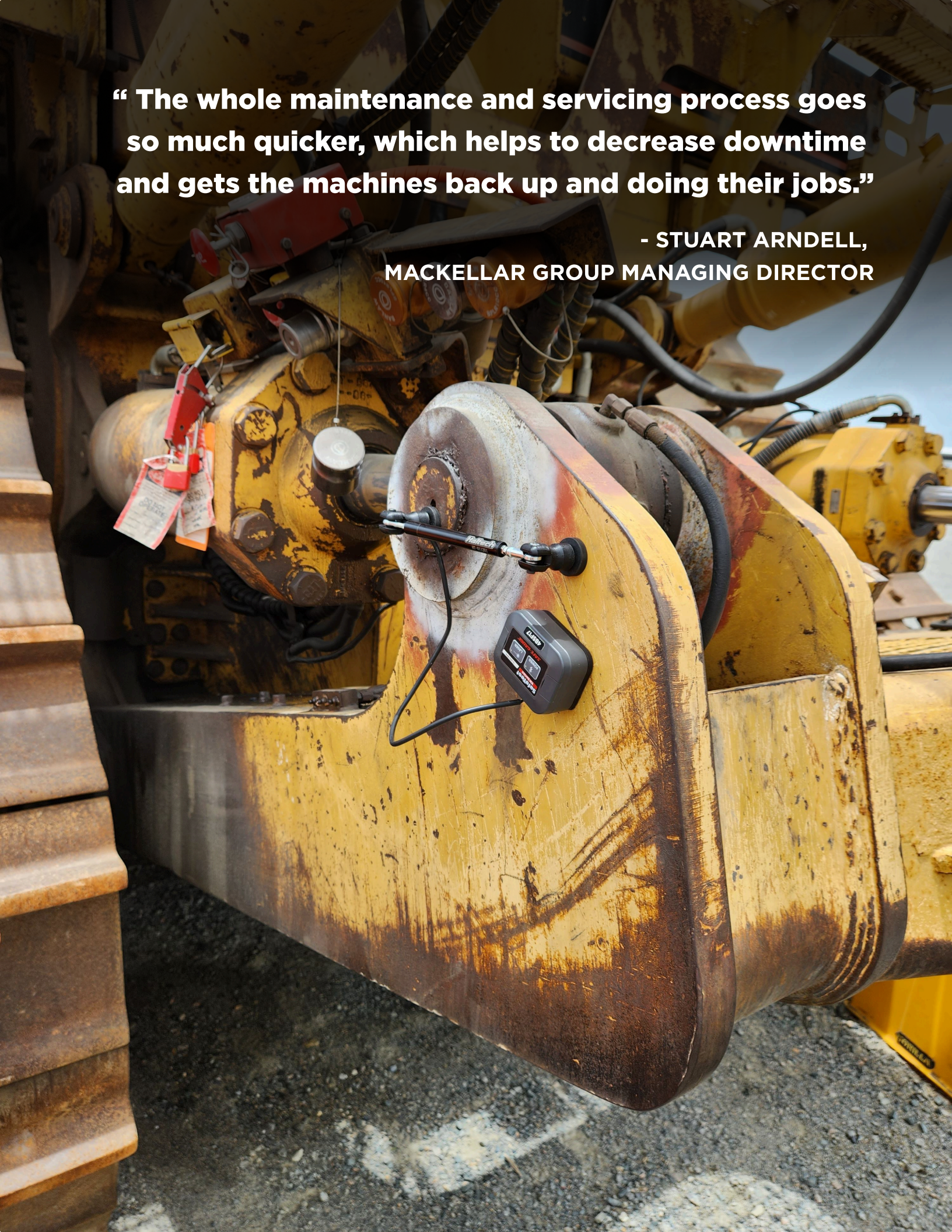


At the end of the day, safety on a site is priceless, and I can see us using SafeGauge for a long time yet.

- FIELD SERVICE FOREMAN

“ The whole maintenance and servicing process goes so much quicker, which helps to decrease downtime and gets the machines back up and doing their jobs.”

**- STUART ARNDELL,
MACKELLAR GROUP MANAGING DIRECTOR**



LOCATIONS

SG Offices ● Distributors ●



OFFICES

AUSTRALIA

Our Headquarters

📍 [8/31 Yilen Cl, Beresfield NSW 2322](#)

📞 [1300 222 392](#)

UNITED STATES

Regional Office

📍 [SafeGauge, 3370 N. Hayden Rd Ste. 123 PMB 309, Scottsdale, AZ 85251](#)

📞 [+13462041273](#)

DISTRIBUTORS

BRAZIL

BESC Global

📍 [Rua Hanover, 75 Jardim Canada, Nova Lima MG, 34007](#)

📞 [+55 \(31\) 30431743](#)

CANADA

Big Country Equipment Repair Ltd.

📍 [301 - 1460 Chief Louis Way Kamloops, BC V2H 1J8](#)

📞 [+12502994233](#)

UNITED STATES

Arnold Machinery Company

📍 [West 2100 South, Salt Lake City, UT 84119](#)

📞 [+18019724000](#)

USA & CANADA

L&H Industrial

📍 [913 L&J Court Gillette, WY 82718 USA](#)

📞 [+13076827238](#)

SOUTH AFRICA

Booyco Electronics

📍 [P.O. Box 26847 East Rand 1462 South Africa](#)

📞 [+27 11 823 6842](#)

PERU

Energotec

📍 [Plasticos 204, Lima 15012, Peru](#)

📞 [+51 1 3487570](#)