



CASE STUDY: SAFEGAUGE IS NOT JUST FOR LARGE MINING COMPANIES; ELIMINATION OF LIVE WORK IS FOR EVERYONE.

Small business owner, **Robbie Brammer** of **Blackstar Diesel** has taken the first step in the right direction when it comes to improving safety and ensuring he, and his team, return home safely each day.



LOCATION: Townsville, QLD Australia
YEAR: 2024
SOLUTION: SafeTest PT Series & DI Series

THE CLIENT

Blackstar Diesel is a contract maintenance provider to large mining operators in Queensland where safety is critical. They operate both in the field and workshop environments. The business wants to grow into other industries and do more work supporting operations in remote areas where single person testing is critical.

“ As a small business, enhancing the capabilities of each person makes a big difference. ”

THE CHALLENGE

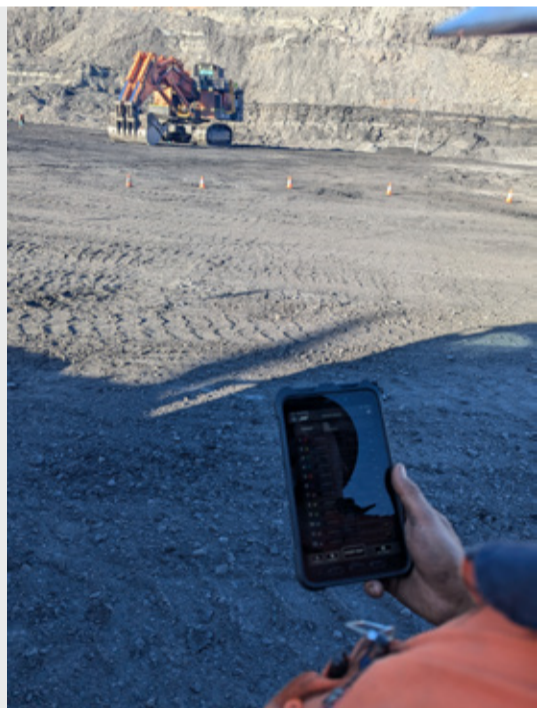
Using manual testing processes meant Robbie was relying heavily on administrative controls when completing high risk tasks. With traditional gauges requiring two personnel, testing in remote locations was challenging and hazardous.

THE SOLUTION

Single person testing is no longer a problem when using the MultiTool. It allows Robbie to take readings from the Pressure Transducers and Dial Indicators from the safety of the cab while controlling the equipment.

“ I have and will continue to recommend this tooling as a quicker way to test that eliminates risk. ”

Diagnosing steering pressures on a dump truck is now an ease. Robbie can now complete the testing on all four points at one time, as opposed to testing all four individually. With traditional gauges, they would need to use hoses and would normally waste time having to find, custom make or join hoses together to run the pressure gauge up to the cab. Slew Deflection testing can also be completed safely, well out of the swing radius of even the largest machines.



THE RESULTS

The SafeGauge tooling has put Blackstar Diesel ahead of competitors in both efficiency and safety. The tooling has greatly increased productivity through multiple channel testing and reduced set-up time of the traditional pressure transducers.

Allowing Robbie to grow his business in the future and scale more effectively.

“ SafeGauge is very easy to work with. If you can operate a phone, you can operate the SafeGauge tooling, it's so much better/quicker than traditional gauges ”

